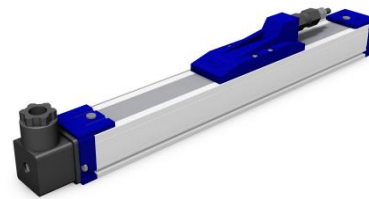


Datasheet



- k Ω -, V- or mA-Version available
- Measuring length 30 to 1250 mm
- Adjustable resolution
- Repeatability <0,01 mm
- IP-Rating: IP65



Mechanical Data

Version	k Ω	V oder mA
Dimension		
Housing	33 x 33 mm	
Piston	Ø6 mm	
Measuring Length (ML)	See table	
Material		
Housing	Aluminium, anodized	
Piston	Stainless steel	
Connector	4-pin	
Repeatability	adjustable	
Life-Time	100 x 10 ⁶ revolution	
Linearity	±0,05 %	
Movement Speed	< 5 m/s	
Operating Temperature	-20°C ... +80°C	
Storage Temperature	-30°C ... +90°C	
IP-Rating	IP65	
Accessories	adjustable fastening elements	

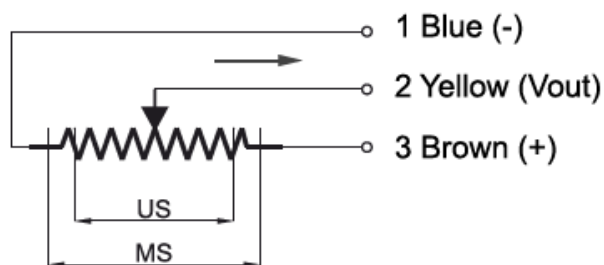
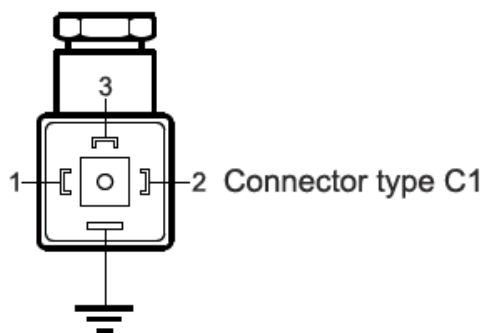
Electrical Data

k Ω -Version		
Supply Voltage	<28 VDC	
Consumption	<1 μ A	
Resistance	5 k Ω 10 k Ω	±20%
Load Resistance	>100 k Ω	
V oder mA-Version		
Supply Voltage	15 – 30 VDC	
Output	4-20 mA 0-20 mA 0-10 V	

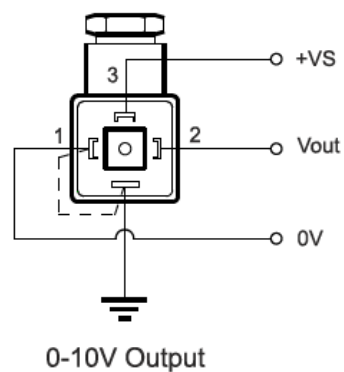
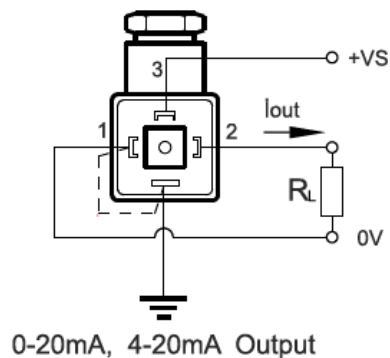
Datasheet

Connector

kΩ-Version



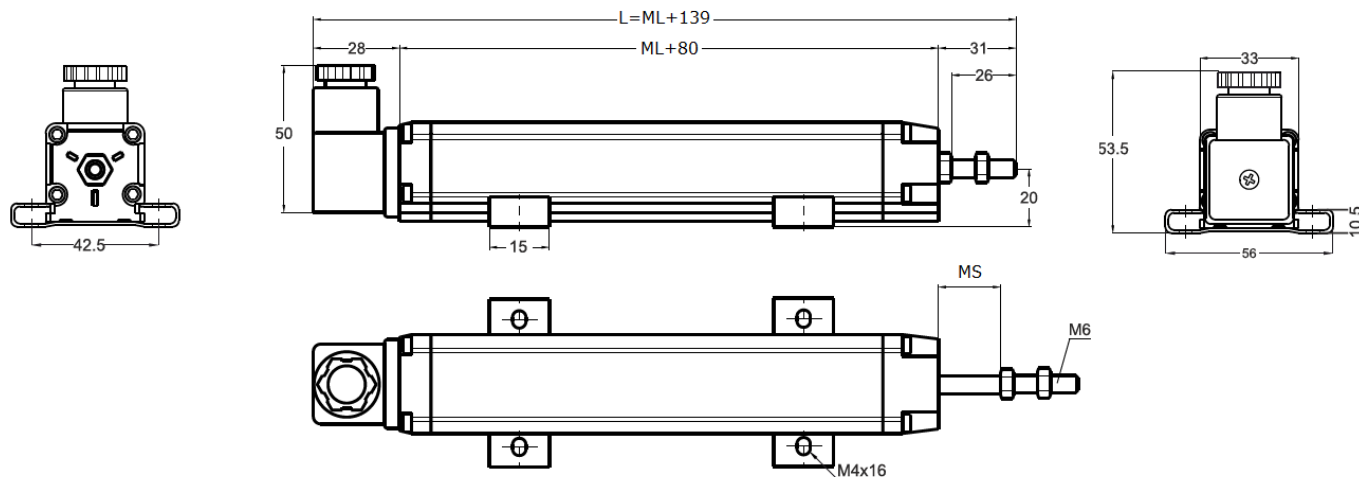
V or mA-Version



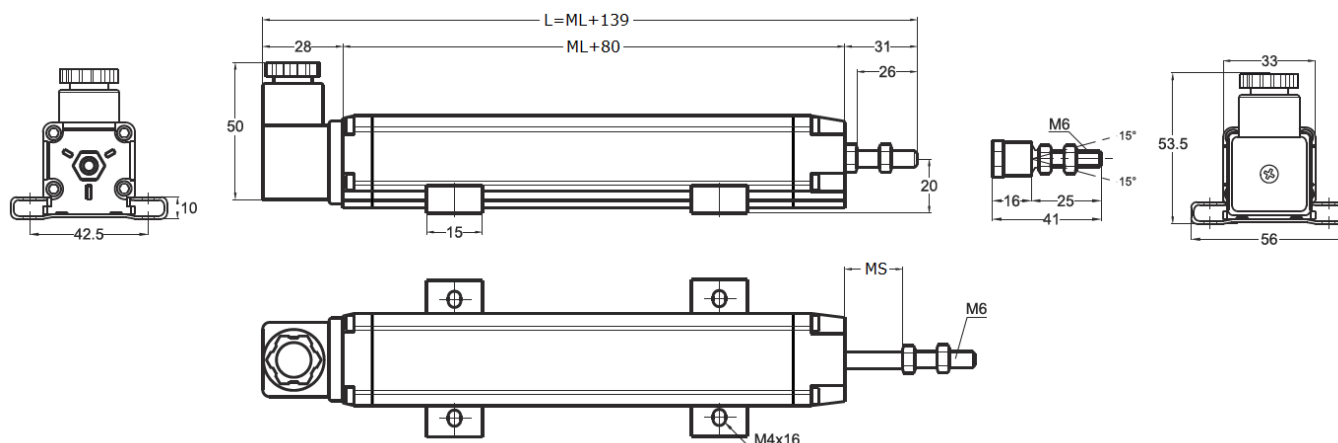
Datasheet

Dimensions

kΩ-Version



V or mA-Version



Measuring Length [ML]		30	50	75	100	125	130	150	175	200	225	250	275	300	325
Total Length [L]	kΩ	161	181	206	231	256	261	281	306	331	356	381	406	431	456
	V or mA	211	231	256	281	306	311	331	356	381	406	431	456	481	506
Stroke Length [MS]		33	53	73	103	128	133	153	178	203	228	253	278	303	328

Measuring Length [ML]		350	375	400	450	500	550	600	650	700	750
Total Length [L]	kΩ	481	506	581	581	631	681	731	781	831	811
	V or mA	531	556	581	631	681	731	781	831	881	931
Stroke Length [MS]		353	373	403	453	503	553	603	653	703	803

